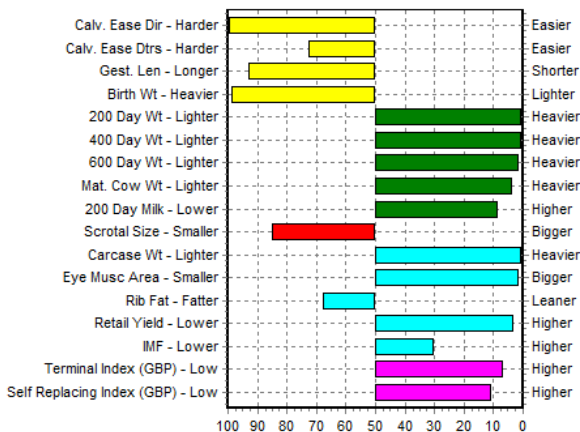




## Sans Cornes

[Remittal Super Duty 42S \(Semen\) \(Imp CAN\) {DLF IEF HYF} co](#)  
[Gouldingpoll 1 Superduty \(Semen\) \(P\) AI ET \(Imp IRL\) {DLF IEF HYF}](#)  
[Romany 1 Lucy A84 F26 \(P\) {DLF IEF HYF} UK562010 400628](#)  
**Sire: SMH King Size 87K AI (Imp DNK) {DLF IEF HYF} 114588-00087**  
[Romany 1 Captain R22 C1 \(P\) TM {HYC} UK562010 100380](#)  
[SMH Delight Sally 16 AI 114588-00016](#)  
[Moeskaer Sally 812 69957-00812](#)  
**Animal: Moralee 1 Panda (P) AI {DLF IEF HYF} UK114914 100060**  
[KJ 2403 Recruit 966R \(Ser/Sire\) {DLF IEF HYF} P42587024](#)  
[Spurstow 1 Recruit 1st \(P\) AI ET \(Imp USA\) {PVE} UK172412 300111](#)  
[Mohican Lucky Lady 107L \(Donor\) {DLF IEF HYF} P42150915](#)  
**Dam: Moralee 1 Kylie (P) {DLF IEF HYF} UK114914 100004**  
[Romany 1 Asteroid A51 \(P\) ET \(Imp CAN\) UK562010 600294](#)  
[Romany 1 Ishbel A51 H52 \(P\) UK562010 200794](#)  
[Romany 1 Ishbel R22 C45 \(P\) UK562010 200430](#)

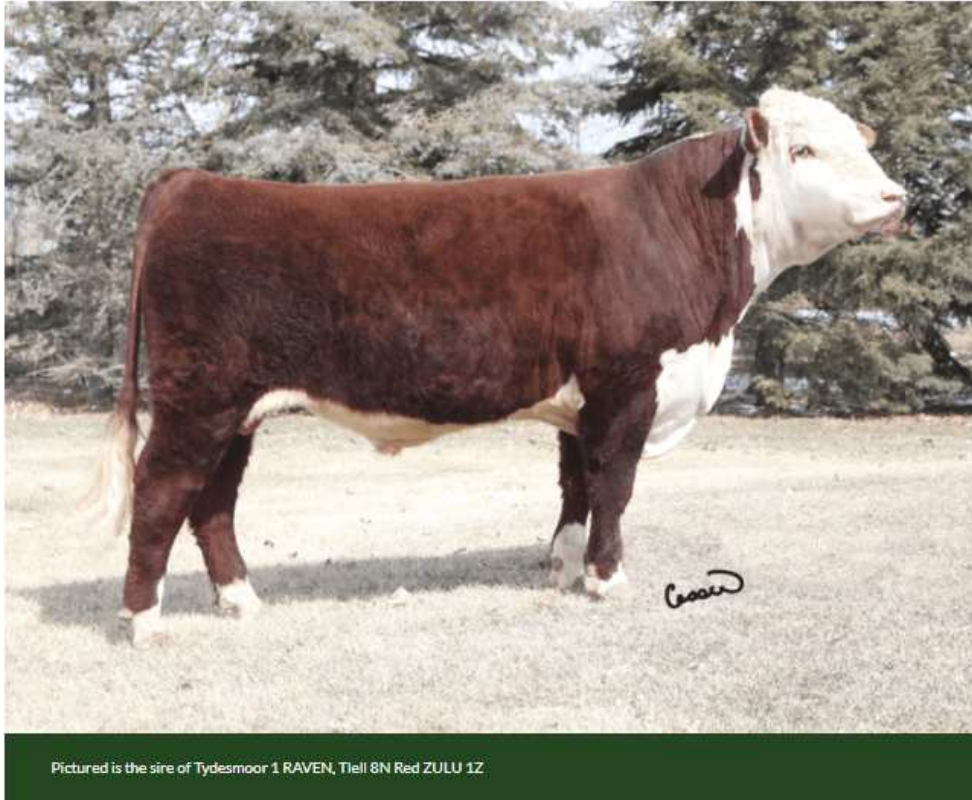
### EBV Percentiles for Moralee 1 Panda (P) AI {DLF IEF HYF}



50th Percentile is the Breed Avg. EBVs for 2019 Born Calves

### September 2021 Hereford BREEDPLAN

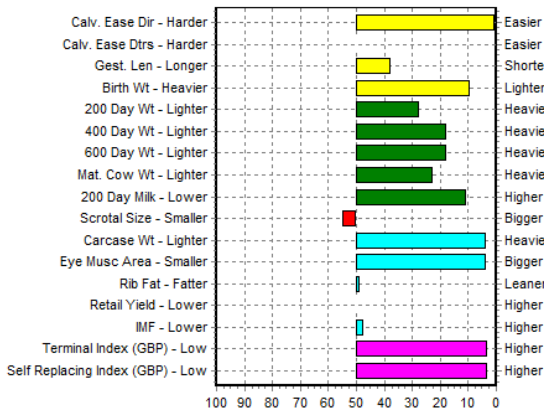
	Calving Ease DIR (%)	Calving Ease DTRS (%)	Gestation Length (days)	Birth Wt. (kg)	200 Day Wt (kg)	400 Day Wt (kg)	600 Day Wt (kg)	Mat. Cow Wt (kg)	200 Day Milk (kg)	Scrotal Size (cm)	Carcase Wt (kg)	Eye Muscle Area (sq cm)	Rib Fat (mm)	Retail Beef Yield (%)	IMF (%)
EBV	-13.3	-2.1	+2.2	+5.7	+43	+76	+98	+87	+12	+0.2	+67	+4.6	+0.1	+1.4	0.0
Accuracy	48%	39%	70%	71%	65%	64%	63%	57%	37%	71%	51%	43%	49%	46%	47%
Breed Avg. EBVs for 2019 Born Calves <a href="#">Click for Percentiles</a>															
EBV	-0.4	-0.4	+0.8	+2.4	+27	+50	+63	+59	+6	+0.8	+41	+2.1	-0.1	+0.4	-0.1



Pictured is the sire of Tydesmoor 1 RAVEN, Tlell 8N Red ZULU 1Z

### Sans Cornes

#### EBV Percentiles for Tydesmoor 1 Raven (P) AI ET {DLF IEF HYF}



50th Percentile is the Breed Avg. EBVs for 2019 Born Calves

- CS Boomer 29F (Ser/Sire) (P) {DLF IEF HYF} 396205/02
- Tlell 29F Red Cedar 8N {DLF IEF HYF} C02826570
- Tlell 38L Gloria 4G C02676683
- **Sire: Tlell 8N Red Zulu 1Z (Semen) (Imp CAN) {DLF IEF HYF}**
- Tlell 199S Red Bull 20U C02913589
- Tlell 20U Jade 32X {DLF IEF HYF} C02941577
- Remittal Jade 257S {DLF IEF HYF} C02881286
- **Animal: Tydesmoor 1 Raven (P) AI ET {DLF IEF HYF} UK163283 201109**
- Star Bright Future 533P (Ser/Sire) ET C02897365
- RVP Star 533P ET C02918528
- Star Bonnie Beth 54N A42357729
- **Dam: Tlell 57U Kali 30Z (Donor) {DLF IEF HYF} C02966593**
- HF 4L Beyond 36N (Ser/Sire) C02828255
- Tlell 36N Kema 8S C02881474
- Haroldson's Kali 035J 58N ET C02836777

### September 2021 Hereford BREEDPLAN

	Calving Ease DIR (%)	Calving Ease DTRS (%)	Gestation Length (days)	Birth Wt. (kg)	200 Day Wt (kg)	400 Day Wt (kg)	600 Day Wt (kg)	Mat. Cow Wt (kg)	200 Day Milk (kg)	Scrotal Size (cm)	Carcase Wt (kg)	Eye Muscle Area (sq cm)	Rib Fat (mm)	Retail Beef Yield (%)	IMF (%)
EBV	+8.5	-	+0.5	+0.4	+32	+62	+78	+72	+11	+0.7	+61	+4.0	-0.1	-	-0.1
Accuracy	26%	-	28%	53%	52%	49%	46%	38%	46%	41%	35%	31%	32%	-	28%
Breed Avg. EBVs for 2019 Born Calves <a href="#">Click for Percentiles</a>															
EBV	-0.4	-0.4	+0.8	+2.4	+27	+50	+63	+59	+6	+0.8	+41	+2.1	-0.1	+0.4	-0.1



<p><b>Tuesday P</b> DEU 14 05377418</p>	<p><b>NJW 73S M326 Trust 100W P</b> CAN 00 02938213</p> <p><b>Tiell 8R Tickle 22T P</b> CAN 00 02897666</p>
<p><b>RZW Bijou PP</b> DEU 14 04860723</p>	<p><b>Haroldsons 45Y Title Shot P</b> CAN 00 02960240</p> <p><b>RZW Bibiana P</b> DEU 14 03219896</p>

**DEU 14 05848798** • German Reg. No. 10.204751  
born: 03/03/2019

<b>Breeding Qualification</b> Type / Conformation / Skeleton	<b>8 / 8 / 7</b>
<b>Birth weight</b>	<b>33 kg</b>
<b>Average daily gain</b> (200 days / 365 days)	<b>1396 g / 1469 g</b>
<b>RZF Total Merit Index Beef</b> Rel. 46%	<b>121</b>
<b>Bull Index Average daily gain</b> (365 days)	<b>111</b>
<b>Bull Index Conformation</b> (365 days)	<b>118</b>